

THE CAMPUS

Cleaning & Sanitation

A full-time day porter will disinfect commonly- touched areas throughout the campus, multiple times per day.

Hospital-grade cleansers will be used every night in all classrooms, restrooms, offices, and other common spaces.

Disinfecting foggers will be used to spot treat areas where suspected illness has occurred.

The nurse's clinic will be disinfected on a regular basis.

Nurse's Clinic & Quarantine Room

The office next to the Nurse Diaz's clinic will be used as a quarantine room for any student exhibiting potential COVID-19 symptoms. The nurse's clinic will continue to treat minor cuts, bruises, injuries, etc.

Water Fountains

Water fountains will remain closed at this time. Water bottle fillers are available on each floor as well as in the cafeteria and outside the gym.

COVID-19 PROTOCOLS

Safety Measures

To help prevent the potential spread of COVID-19 on campus, we will continue with these measures:

- Hand sanitizer at entrances to the school and all classrooms.
 - Air purifiers in every classroom.
 - Hand washing stations outside at recess and in the courtyard.
 - Enhanced cleaning and disinfection of campus spaces and surfaces.
-

Self Screening Before Morning Drop Off

Families are asked to self-screen for COVID symptoms before arriving on campus. If anyone in the household is experiencing COVID symptoms, please keep all your students at home and call Nurse Diaz for your next steps.

Face Masks

- Beginning on Tuesday, January 4 – Face Masks will be required again for all students and staff while indoors at school. This decision will be reviewed again on Friday, January 14.
 - Parents and visitors on campus will still be required to wear masks while indoors or in public indoor spaces.
-

Return to Mask Recommended / Strongly Encouraged Wearing Thresholds

- The positivity rate for the City of Houston/Harris County and the Texas Medical Center stays below 10% for 14 consecutive days.
 - The Harris County COVID-19 Threat Level stays at orange or below.
 - SMCS has fewer than 5 new positive COVID-19 cases and fewer than 10 students or staff in quarantine over a 14 day period.
 - [Click here to see the latest Key Takeaways from the Texas Medical Center](#)
 - [Click here to see the Harris County/City of Houston COVID Data Hub](#)
-

Isolation and Quarantine Clarifications and Updates

UPDATED: January 1, 2022

Please see the clarifications and updates below to the Isolation and Quarantine policies that accompany the daily flow chart. It is important to contact our school nurse, Nurse Diaz, with any questions regarding COVID policies and questions.

Isolation Policy (I tested positive, when may I return?)

In the case of an individual who was tested positive with COVID-19, the individual should

- Stay home for at least 5 days.
- If you have no symptoms or your symptoms are resolving after 5 days, you can leave your house/return to school.
- Anyone who tests positive for COVID-19 must be fever-free for at least 24 hours before returning to school in addition to the above steps.

Quarantine Policy (If you were exposed to someone who tested positive for COVID-19)

- Close contacts are considered individuals who are within 3 feet if both parties are masked or 6 feet if one or neither party is masked for 15 minutes over a 24 hour period.
- Those individuals who are either **vaccinated*** or have tested positive for COVID in the last 90 days and have recovered do not need to quarantine.
 - **Vaccinated individuals**
 - **Have been boosted**
 - OR
 - **Completed the primary series of Pfizer or Moderna vaccine within the last 6 months**
 - OR
 - **Completed the primary series of J&J vaccine within the last 2 months**
 - Vaccinated students are required to get tested 5 days after COVID-19 exposure and will be required to wear a mask for 14 days after exposure.
- Individuals who are **NOT fully vaccinated*** must complete a quarantine period as described below.
 - **Individual who are considered NOT fully vaccinated:**
 - **Completed the primary series of Pfizer or Moderna vaccine over 6 months ago and are not boosted**
 - OR
 - **Completed the primary series of J&J over 2 months ago and are not boosted**
 - OR
 - **Are unvaccinated**
 - Quarantine for 5 days with PCR test and no symptoms: Individual tests on day 5 after exposure and after receiving a negative PCR test and has no symptoms may return on day 6. The individual is then monitored until the 11th day at school for symptoms.
- 14-day quarantine with NO test and NO symptoms: No PCR test and no symptoms individual may return on day 15.
- If the individual has symptoms, they must immediately self-isolate, retest for COVID-19, and contact our School Nurse, Nurse Diaz.

International Travel

After Arrival in the United States:

Vaccinated International Travelers: (Please refer to the definition of fully vaccinated above.)

- Get tested with a COVID-19 PCR Viral test **3-5 days after returning to the United States**. If COVID negative, you may return to school upon the negative test result. If COVID positive, contact the school and follow COVID protocols.
- Self-monitor for COVID-19 symptoms for 14 days after travel, and get tested if you develop symptoms.

Individuals who are NOT considered Fully Vaccinated International Travelers:

(Please refer to the definition of individuals who are not considered fully vaccinated above.)

- Get tested with a COVID-19 PCR test 3-5 days after returning to the United States. If COVID negative, you return to school on day 8 after travel. If COVID positive, please contact the school and follow COVID protocols.
 - Stay home and self-quarantine for a full 7 days after travel, even if you test negative after 3-5 days.
 - If you don't get tested after travel, stay home and self-quarantine for 10 days after travel and return to school on day 11. Upon returning to school, the student will be required to wear a mask at school for one week.
-

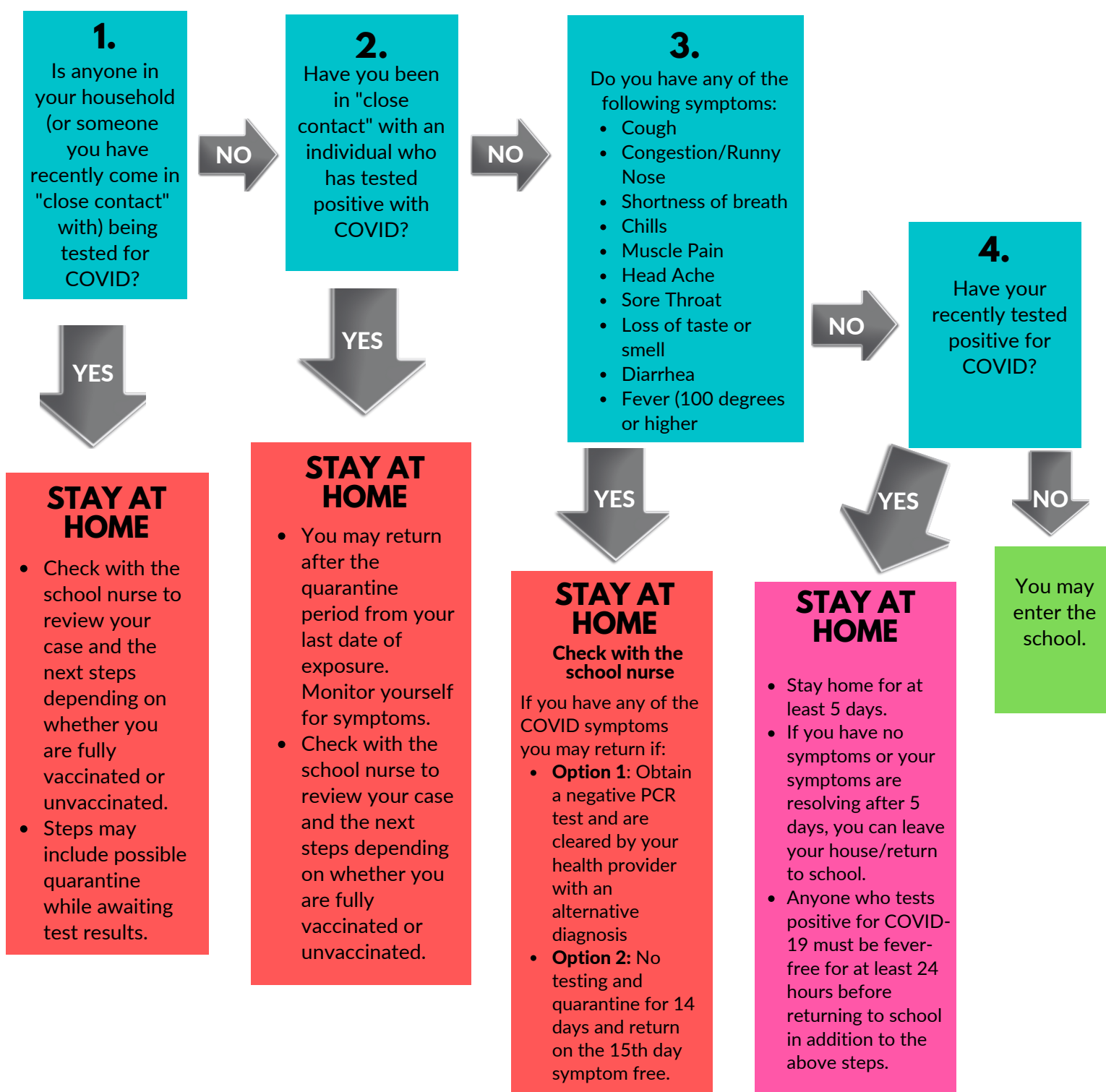
Travel Information from the CDC

- [Domestic Travel Information from the CDC](#)
- [International Travel Information](#)
- [Cruise Ship Travel Information](#)

Health & Safety: May I enter the school?

Each day, it will be important for each parent, student, and staff member to carefully assess whether they can safely enter campus. This flow chart describes the decision-making process by which individuals should determine whether or not they should stay home, or enter the school campus.

It is important to contact our school nurse, Nurse Diaz, every time your child is absent per the flowchart below.



SCHOOL ACTIVITIES

Athletics

Both Parish Sports and Middle School sports will continue to run. Starting on Tuesday, January 4, 2022, players will be required to wear a mask when they are **not actively playing or practicing** while indoors. Masks will continue to be required for all spectators at indoor games and competitions.

Birthday Treats & Birthday Lunch

Parents are invited to drop off a special lunch and birthday treats on their child's birthday or half birthday (for summer birthdays). An online sign-up feature will be sent to you from your teacher, or head room parent, to avoid two birthday treats on the same day. Small treats such as cupcakes, cookies, or brownies are preferable for your child's grade level (no nuts please). All treats must be store-bought.

In addition, every child is recognized during morning prayer on their birthday.

Brown Bag Lunch

At this time, we will re-examine Brown Bag Lunch in January of 2022. If we do not have a Brown Bag Lunch in the spring of 2022, parents will be given the opportunity to order Chick-Fil-A for their students like they did in the Fall.

Christmas Programs

PK3-5th Grade Students will participate in Christmas programs in December. Parents will be invited to attend the Christmas Programs in person but will be required to reserve their seats ahead of time. There will be a limit of 2 family members per student at each performance.

Christmas Parties

Christmas parties will be held on Friday, December 17. Because of limited space in the classrooms, parents will not be able to attend Christmas parties.

Field Trips

As long as COVID numbers in the community continue to trend in the right direction, field trips will resume in January of 2022.

Lunch

ECI will continue to use their online ordering system for lunches at this time. All lunches will be boxed up and ready for students at their lunchtime.

Students will continue to be spread out during lunch. PK3 will eat in their classroom and 1st and 8th Grade will eat in the Tiger Gym.

Middle School PE Uniforms

Middle school students will not change into PE uniforms for PE.

We will re-evaluate this again in January of 2022.

Morning Prayer/Morning Assembly

We will continue to do morning prayer in homeroom classrooms at this time.

We will re-evaluate morning assembly in January of 2022.

P.E.

Starting on January 4, 2022, students will be required to wear a mask during PE while indoors. This policy will be reviewed on Friday, January 14, 2022.

Recess

Masks are not required for outdoor recess for any students.

School Mass

We will continue to attend daily Mass by grade levels. Two grade levels will attend Mass each day instead of one. We will communicate any changes to this schedule.

Monday-7th & 8th Grade Mass Day

Tuesday-5th & 6th Grade Mass Day

Wednesday-3rd & 4th Grade Mass Day

Thursday-1st & 2nd Grade Mass Day

Friday-Kindergarten & PK4 Mass Day

Visitors & Volunteers on Campus

We will continue to welcome a limited number of visitors onto campus. Faculty and staff will continue in-person meetings with families. Masks will be required for all adults including volunteers and visitors while inside on campus.